

# **HERRINGTON HARBOUR SAILING ASSOCIATION**



## **HHSA SAILING INSTRUCTIONS 2018**

Approved by the Board of Directors, Herrington Harbour Sailing Association, March 2018



## Table of Contents

Introduction .....	1
Starting Sequence .....	1
Designating Courses to be Sailed .....	1
Example Start Sequence .....	2
HHSA Wednesday Night Races .....	5
HHSA Bloody Point Race .....	6
HHSA Summer Regatta .....	7
HHSA Women's Regatta .....	9
HHSA Sharps Island Race .....	11
HHSA Great Bay Race .....	12
HHSA Double-handed Race .....	13
HHSA West River Race .....	14
HHSA Informal Cruise Pursuit Race .....	22
HHSA Autumn Classic Race .....	23
HHSA Frostbite Series (6 multi-race days) .....	24
Appendix A - Special Instructions for Cruising Classes .....	26
Appendix B - Special Instructions for a Rabbit Start .....	29



## Introduction

HHSA racing events are governed by the “rules” as defined in the Racing Rules of Sailing (RRS) except as any of these are altered by these Sailing Instructions and any amendments or the HHSA Racing Rules.

The current HHSA Course Book and HHSA Racing Rules are separate documents. However, they are part of the Sailing Instructions and any reference to the Sailing Instructions includes the Course Book and Racing Rules by reference.

## Starting Sequence

HHSA uses the starting sequence as specified in Racing Rules of Sailing. Additionally, the club requires the use of the ‘L’ flag as defined in the back cover of the RRS to mean “come within hail or follow me” while the committee boat is going on station. The ‘L’ flag will be lowered exactly one minute before the next flag is to be raised accompanied by repetitive horn blasts. Together, these signals will indicate to competitors that the starting sequence is about to commence.

If the start of the race is delayed the AP flag will be displayed with two (2) sounds, and lowered with one (1) sound one minute before the new starting sequence begins.

## Designating Courses to be Sailed

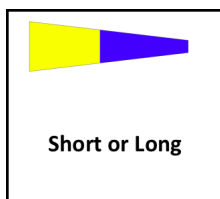
Class course boards hung on the non-starting side of the Committee Boat will indicate which option of the course is to be sailed – either Short or Long. The Sailing Instructions will specify the classes to be sailed and if starts are to be combined.

Numeral Pennant 5 will indicate the Non-Spinnaker Racing course, or the combined Non-Spinnaker Racing/Cruising course

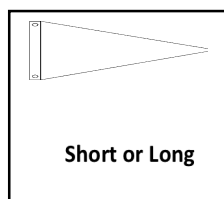
White Pennant will indicate the Non-Spinnaker Cruising Course

Numeral Pennant 6 will indicate the Combined Spinnaker Course, or the Spinnaker B course

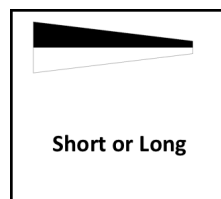
Numeral Pennant 9 will indicate the Spinnaker A course



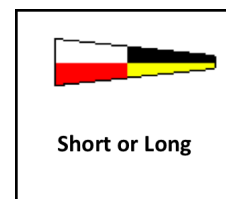
Non-Spin Racing  
Board & Combined  
Non-Spin Start Board



Non-Spin Cruising  
Board

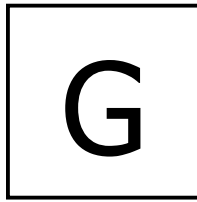


Spin B Board &  
Combined Spin  
Class Board



Spin A Board

A separate board with either a single letter A through Z or numeral 1 through 4 will indicate which course from the HHSA Course Book will be sailed.



Example Course Board for Course “G”

### Example Start Sequence

The following chart shows an example of a starting sequence with spinnaker boats starting first, followed by non-spinnaker boats.

### Multiple-Start Sequence

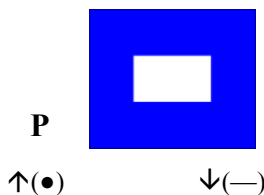
<i>Signal</i>	<i>Flag &amp; Sound</i>	<i>VHF (recommended)</i>	<i>Minutes before start signal</i>	<i>Example time for Wednesday races</i>
Follow-me/ Check-in	'L' at full hoist;	"Welcome, racers"		
	'L' lowered, multiple short horn blasts		6	1829
Warning	Spin Class Flag Raised; 1 horn blast	"5, 4, 3, 2, "	5	1830
Preparatory	'P' raised; 1 horn blast	"Spin Prep"	4	1831
One-minute	'P' lowered; 1 <b>long</b> horn blast	"5, 4, 3, 2, "	1	1834
Starting	Spin Class Flag lowered; Non-Spin Class Flag Raised; 1 sound (gun or horn)	"5, 4, 3, 2, all clear"	0	1835
Preparatory	'P' raised; 1 horn blast	"Non-Spin prep"	4	1836
One-Minute	'P' lowered; 1 <b>long</b> horn blast	"5, 4, 3, 2, "	1	1839
Starting	Non-Spin Class Flag lowered; 1 sound (gun or horn)	"5, 4, 3, 2, all clear"	0	1840



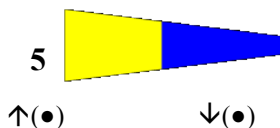
## Common Signals

The meanings of visual and sound signals commonly used at HHSA are stated below. An arrow pointing up or down (↑ ↓) means that a visual signal is displayed or removed. A dot (●) means a sound; five dashes (---) mean repetitive sounds; a long dash (—) means a long sound; empty parentheses () indicate no sound. When a visual signal is displayed over a class flag, the signal only applies to that class.

### Starting Signals



**Preparatory:** Up - Four minutes until the class start. All boats in the class are considered racing. Down one minute before class start.



**Non-Spinnaker Racing, or Combined Racing/Cruising Start Class Warning:** Up at the warning signal for the non-spinnaker class. Down with gun or horn for the start.



**Spinnaker B, or Combined Spinnaker Class Warning:** Up at warning signal. Down with gun or horn for the start.



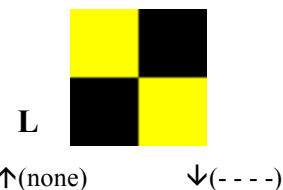
**Spinnaker A Class Warning:** Up at warning signal. Down with gun or horn for the start.



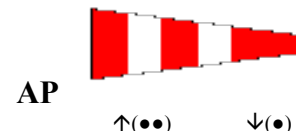
↑(●)      ↓(●)

### Non-Spinnaker Cruising

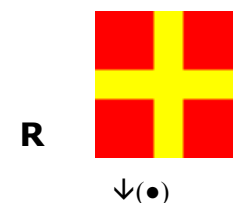
**Class Warning:** Up at warning signal. Down with gun or horn for the start.



**L Flag:** Afloat: Come within hail or follow this boat. Down with multiple sounds one minute before new start sequence.



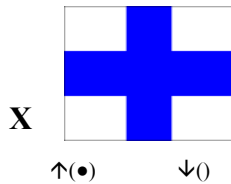
**Answering Pennant:** Races not started are postponed. Start sequence to commence one minute after removal.



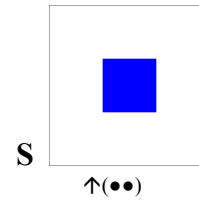
**R Flag:** When flown from the Committee Boat indicates that another race is planned. Down one minute before warning signal of next race.



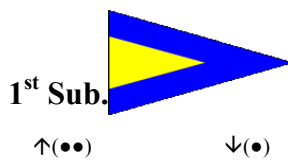
## Other Signals



**Individual Recall:** One or more boats were OCS. The flag is displayed until all boats have properly started or at the succeeding start's one-minute signal, whichever is first.



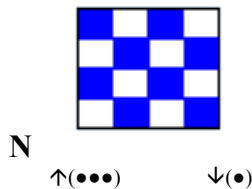
**S Flag:** Displayed with two sounds to indicate that course has been shortened.



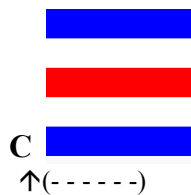
**General Recall:** The entire class will be restarted. The warning signal will be one-minute after the flag is removed.



**Y Flag:** When displayed from the committee boat, wear a personal floatation device.



**N Flag:** Races started are abandoned. Return to starting area. Start sequence will commence one minute after removal, unless all racing is subsequently abandoned.



**C Flag:** Displayed with repetitive sounds to indicate a change of course.



## HHSA Wednesday Night Races

Dates	Practice Races .... Wed April 25 and Sat April 28 Series 1.....May 2 May 9, May 16, May 23, May 30, June 6 Series 2.....Jun 13, Jun 20, Jun 27, Jul 11, Jul 18, Jul 25 Series 3.....Aug 1, Aug 8, Aug 15 Aug 22, Aug 29, Sep 5 Season-End-Free-for-All ..... Sep 12		
Approx. Times	<i>Signal</i>	<i>Spinnaker</i>	<i>Non-Spinnaker</i>
	Warning	1830	1835
	Preparatory	1831	1836
	One-minute	1834	1839
	Start	1835	1840
	Note: Non-Spinnaker Racing and Non-Spinnaker Cruising classes will start together and be scored separately. Class warning flags will be “6” for Spin, and “5” for combined Non-Spin.		
Skippers’ Meeting	None		
Rendezvous	Race Committee, within 2 miles of HHSA A at approx. 1810 hours.		
Start	Between Committee Boat and drop mark or other nearby mark		
Finish	Between Committee Boat and HHSA A		
Course	Designated by a sign boards on Committee Boat. The Race Committee must select a course from the HHSA Course Book. Different versions of the course (Short or Long) may be set for the Spinnaker and Non-Spinnaker Classes.		
Time Qualifications	In order for the race to qualify, the lead boat in each class must finish within 2 hours after the starting signal, and each boat must finish before 9:30 pm or be scored as TLE. This modifies RRS 35.  The Race Committee will sound 3 blasts at 2130 hours to signal TLE for boats still on the course and announce on VHF Channel 68.		
Protests	The protest time limit is 2 hours after racing has concluded for the day.		
Awards	Wednesday races count towards High Point and Commodore’s Cup. Awards given out per Series. See HHSA Racing Rules for details.		
Social	An informal gathering at Skipper's Pier restaurant.		



## HHSA Bloody Point Race

Date	Saturday, May 19, 2018															
Approx. Times	<p>The table shows the approximate times for the race.</p> <table><tr><th><i>Signal</i></th><th><i>Spinnaker</i></th><th><i>Non-Spinnaker</i></th></tr><tr><td>Warning</td><td>1355</td><td>1400</td></tr><tr><td>Preparatory</td><td>1356</td><td>1401</td></tr><tr><td>One-minute</td><td>1359</td><td>1404</td></tr><tr><td>Start</td><td>1400</td><td>1405</td></tr></table> <p><b>Note:</b> Non-Spinnaker Racing and Non-Spinnaker Cruising will start together but will be scored separately. Class warning flags will be “6” for Spin and “5” for combined Non-Spin.</p>	<i>Signal</i>	<i>Spinnaker</i>	<i>Non-Spinnaker</i>	Warning	1355	1400	Preparatory	1356	1401	One-minute	1359	1404	Start	1400	1405
<i>Signal</i>	<i>Spinnaker</i>	<i>Non-Spinnaker</i>														
Warning	1355	1400														
Preparatory	1356	1401														
One-minute	1359	1404														
Start	1400	1405														
Skippers’ Meeting	<p>None.</p> <p>Preregistration on <a href="http://www.hhsa.org">www.hhsa.org</a> is recommended.</p>															
Rendezvous	Race Committee at HHSA A at approx. 1000 hours.															
Start	Between Committee Boat and HHSA A															
Finish	Between Committee Boat and HHSA A															
Course	The course shall be course ‘V’ from the HHSA Course Book. The course version (Long or Short) for each class will be designated by boards displayed on the Committee Boat.															
Time Qualifications	In order for the race to qualify, the lead boat in each class must finish within six hours of the class start. The Race Committee will stay on station until at least 90 minutes after the last class qualifies. Boats finishing after the Race Committee has left station shall take their own finish times in accordance with HHSA Rules 7.C & 8.B.															
Protests	The protest time limit is 2 hours after racing has concluded for the day.															
Awards	Counts towards High Point and Commodore’s Cup. See HHSA Racing Rules for details.															
Social	An informal gathering at a local restaurant or location announced by the Race Committee.															
Other	VHF Channel 68 will be monitored.															





## HHSA Summer Regatta

Date	Sunday, June 10, 2018															
Approx. Times	<p>The table shows the approximate times for the first race, with spinnaker boats starting first.</p> <table><tr><td><i>Signal</i></td><td><i>Spinnaker</i></td><td><i>Non-Spinnaker</i></td></tr><tr><td>Warning</td><td>1055</td><td>1100</td></tr><tr><td>Preparatory</td><td>1056</td><td>1101</td></tr><tr><td>One-minute</td><td>1059</td><td>1104</td></tr><tr><td>Start</td><td>1100</td><td>1105</td></tr></table> <p><b>Note:</b> Non-Spinnaker Racing and Non-Spinnaker Cruising will start together but will be scored separately. Class warning flags will be: “6” for Spin and “5” for combined Non-Spin.</p>	<i>Signal</i>	<i>Spinnaker</i>	<i>Non-Spinnaker</i>	Warning	1055	1100	Preparatory	1056	1101	One-minute	1059	1104	Start	1100	1105
<i>Signal</i>	<i>Spinnaker</i>	<i>Non-Spinnaker</i>														
Warning	1055	1100														
Preparatory	1056	1101														
One-minute	1059	1104														
Start	1100	1105														
Skippers’ Meeting	None. Preregistration on <a href="http://www.hhsa.org">www.hhsa.org</a> is recommended.															
Rendezvous	Race Committee in vicinity of HHSA A at approx. 1000 hours															
Start	Between Committee Boat and nearby drop mark															
Finish	Between Committee Boat and designated mark															
Course	The courses sailed will be identified by sign boards on the committee boat, and will be either “2”, “3” or “4” as shown on Page 16 of the Course Book.															
Scoring	PHRF windward/leeward ratings will be used for this regatta.															
Time Qualifications	<p>In order for a race to qualify, the lead boat in each class must finish within 75 minutes after the starting signal.</p> <p>Each boat must finish within 30 minutes after the lead boat in her class or be scored as TLE. This modifies RRS 35.</p>															
Protests	The protest time limit is 2 hours after racing has concluded for the day.															
Awards	Counts towards High Point and Commodore’s Cup. Awards given out per Series. See HHSA Racing Rules for details.															
Social	An informal gathering at a local restaurant or location announced by the Race Committee.															
Other	VHF Channel 68 will be monitored.  Multiple races are planned. If a subsequent race is anticipated, the Race															



## HHSA Sailing Instructions 2018

	Committee will announce its intentions as boats finish the preceding race, and may fly Flag R. If Flag R is raised, it will be lowered with one sound one minute before the <b>Warning</b> signal for the subsequent race.
--	--



## HHSA Women's Regatta

Date	Saturday, June 16, 2018															
Approx. Times	<p>The table shows the approximate times for the first race.</p> <table><tr><td><i>Signal</i></td><td><i>Spinnaker</i></td><td><i>Non-Spinnaker</i></td></tr><tr><td>Warning</td><td>1055</td><td>1100</td></tr><tr><td>Preparatory</td><td>1056</td><td>1101</td></tr><tr><td>One-minute</td><td>1059</td><td>1104</td></tr><tr><td>Start</td><td>1100</td><td>1105</td></tr></table> <p><b>Note:</b> If entries warrant, there will be separate starts for Spinnaker and Non-Spinnaker. Class flags will be “6” for Spin and “5” for Non-Spin.</p>	<i>Signal</i>	<i>Spinnaker</i>	<i>Non-Spinnaker</i>	Warning	1055	1100	Preparatory	1056	1101	One-minute	1059	1104	Start	1100	1105
<i>Signal</i>	<i>Spinnaker</i>	<i>Non-Spinnaker</i>														
Warning	1055	1100														
Preparatory	1056	1101														
One-minute	1059	1104														
Start	1100	1105														
Skippers’ Meeting	<p>0900 hours, HHN Slip Holders Lounge near C Dock.</p> <p>Preregistration on <a href="http://www.hhsa.org">www.hhsa.org</a> is recommended.</p>															
Registration	<p>HHSA entrants should register on the HHSA website. Non-HHSA entrants should submit the following information to the HHSA Rear Commodore Racing via e-mail at <a href="mailto:slotwita@yahoo.com">slotwita@yahoo.com</a> or via mail at Ted Slotwinski, 1016 Cosimano Place, West River, MD 20778, or to Emily Manders at <a href="mailto:emilymanders@comcast.net">emilymanders@comcast.net</a>.</p> <p>Boat name. Owner/skipper. Boat make and model. Owner club affiliation. PHRF Windward/Leeward ratings. E-mail or phone contact for owner/skipper.</p> <p>An entrant list will be maintained on the HHSA web site racing page.</p>															
Rendezvous	Race Committee in vicinity of HHSA A at approx. 1000 hours															
Start	Between Committee Boat and nearby inflatable mark.															
Finish	Between Committee Boat and nearby mark.															
Course	Designated by sign boards on the Committee Boat. The Race Committee shall select a course from the HHSA Course Book, available on <a href="http://www.hhsa.org">www.hhsa.org</a> .															
Scoring	<p>Scoring will be Time-on-Time using PHRF Windward/Leeward ratings and the following formulae:</p> <p>Corrected time = (elapsed time) x (time correction factor, TCF) TCF = 550 / (550 + PHRF rating)</p>															
Time Qualifications	In order for the race to qualify, the lead boat in each class must finish within 75 minutes of the start. Each boat must finish within 30 mins of the first boat in its class or be scored as TLE. This modifies RRS 35.															
Protests	The protest time limit is 90 minutes after racing has concluded for the day.															
Awards	For HHSA boats, the results do not count towards High Point. Awards will be presented at the HHSA Annual Banquet.															



## HHSA Sailing Instructions 2018

Other	The Race Committee will make courtesy announcements on VHF Channel 68. Multiple races are planned. If a subsequent race is anticipated, the Race Committee will announce its intentions as boats finish the preceding race, and fly Flag R. If Flag R is raised, it will be lowered with one sound one minute before the Warning signal for the subsequent race.



## HHSA Sharps Island Race

Date	Saturday, June 23, 2018															
Approx. Times	<p>The table shows the approximate times for the race.</p> <table><tr><td><i>Signal</i></td><td><i>Spinnaker</i></td><td><i>Non-Spinnaker</i></td></tr><tr><td>Warning</td><td>1655</td><td>1700</td></tr><tr><td>Preparatory</td><td>1656</td><td>1701</td></tr><tr><td>One-minute</td><td>1659</td><td>1704</td></tr><tr><td>Start</td><td>1700</td><td>1705</td></tr></table> <p><b>Note:</b> Non-Spinnaker Racing and Non-Spinnaker Cruising will start together but will be scored separately. Class warning flags will be “6” for Spin and “5” for combined Non-Spin.</p>	<i>Signal</i>	<i>Spinnaker</i>	<i>Non-Spinnaker</i>	Warning	1655	1700	Preparatory	1656	1701	One-minute	1659	1704	Start	1700	1705
<i>Signal</i>	<i>Spinnaker</i>	<i>Non-Spinnaker</i>														
Warning	1655	1700														
Preparatory	1656	1701														
One-minute	1659	1704														
Start	1700	1705														
Skippers’ Meeting	<p>None.</p> <p>Preregistration on <a href="http://www.hhsa.org">www.hhsa.org</a> is recommended</p>															
Rendezvous	Race Committee at HHSA A at approx. 1600 hours															
Start	Between Committee Boat and HHSA A															
Finish	Between Committee Boat and HHSA A															
Course	The course shall be course U from the HHSA Course Book. The course version (Long or Short) for each class will be designated by boards displayed on the Committee Boat.															
Time Qualifications	In order for the race to qualify, the lead boat in each class must finish within six hours of the class start. The Race Committee will stay on station until at least 90 minutes after the last class qualifies. Boats finishing after the Race Committee has left station shall take their own finish times in accordance with HHSA Rules 7.C & 8.B.															
Protests	The protest time limit is 2 hours after racing has concluded for the day.															
Awards	Counts towards High Point and Commodore’s Cup.															
Social	An informal gathering at a local restaurant or location announced by the Race Committee.															
Other	VHF Channel 68 will be monitored.															



## HHSA Great Bay Race

Date	Sunday, July 22, 2018															
Approx. Times	<p>The table shows the approximate times for the race.</p> <table><tr><td><i>Signal</i></td><td><i>Spinnaker</i></td><td><i>Non-Spinnaker</i></td></tr><tr><td>Warning</td><td>1355</td><td>1400</td></tr><tr><td>Preparatory</td><td>1356</td><td>1401</td></tr><tr><td>One-minute</td><td>1359</td><td>1404</td></tr><tr><td>Start</td><td>1400</td><td>1405</td></tr></table> <p><b>Note:</b> Non-Spinnaker Racing and Non-Spinnaker Cruising will start together but will be scored separately. Class warning flags will be “6” for Spin and “5” for combined Non-Spin.</p>	<i>Signal</i>	<i>Spinnaker</i>	<i>Non-Spinnaker</i>	Warning	1355	1400	Preparatory	1356	1401	One-minute	1359	1404	Start	1400	1405
<i>Signal</i>	<i>Spinnaker</i>	<i>Non-Spinnaker</i>														
Warning	1355	1400														
Preparatory	1356	1401														
One-minute	1359	1404														
Start	1400	1405														
Skippers’ Meeting	<p>None.</p> <p>Preregistration on <a href="http://www.hhsa.org">www.hhsa.org</a> is recommended.</p>															
Rendezvous	Race Committee, in vicinity of HHSA A at approx. 1300 hours.															
Start	Between Committee Boat and HHSA A															
Finish	Between Committee Boat and HHSA A															
Course	The course shall be course ‘X’ from the HHSA Course Book. The course version (Long or Short) for each class will be designated by boards displayed on the Committee Boat.															
Time Qualifications	In order for the race to qualify, the lead boat in each class must finish within six hours of the class start. The Race Committee will stay on station until at least 90 minutes after the last class qualifies. Boats finishing after the Race Committee has left station shall take their own finish times in accordance with HHSA Rules 7.C & 8.B.															
Protests	The protest time limit is 2 hours after racing has concluded for the day.															
Awards	Counts towards High Point and Commodore’s Cup. See HHSA Racing Rules for details.															
Social	An informal gathering at a local restaurant or location announced by the Race Committee.															
Other	VHF Channel 68 will be monitored.															



## HHSA Double Handed Race

Date	Sunday, August 12, 2018										
Approx. Times	<p>The table shows the approximate times for the race.</p> <table> <tr> <th><i>Signal</i></th><th><i>All Boats</i></th></tr> <tr> <td>Warning</td><td>1055</td></tr> <tr> <td>Preparatory</td><td>1056</td></tr> <tr> <td>One-minute</td><td>1059</td></tr> <tr> <td>Start</td><td>1100</td></tr> </table> <p><b>Note:</b> One start. Scorer may score multiple classes. Class flag will be the HHSA burgee.</p>	<i>Signal</i>	<i>All Boats</i>	Warning	1055	Preparatory	1056	One-minute	1059	Start	1100
<i>Signal</i>	<i>All Boats</i>										
Warning	1055										
Preparatory	1056										
One-minute	1059										
Start	1100										
Skippers' Meeting	<p>None.</p> <p>Preregistration on <a href="http://www.hhsa.org">www.hhsa.org</a> is recommended</p>										
Rendezvous	Race Committee at HHSA A at approx. 1000 hours										
Start	Between the Committee Boat and nearby mark										
Finish	Between the Committee Boat and HHSA A										
Course	Designated by a sign boards on Committee Boat. The Race Committee shall select a course from the HHSA Course Book.										
Time Qualifications	In order for the race to qualify, the lead boat in each class must finish within 3 hours of the start. Each boat must finish 90 mins. of the first boat or be scored as TLE. This modifies RRS 35.										
Protests	The protest time limit is 2 hours after racing has concluded for the day.										
Awards	Does not count towards High Point. Counts for Commodore's Cup.										
Social	An informal gathering at a local restaurant or location announced by the Race Committee.										
Other	<p>Each participating vessel shall have two people on board. Depending on entries, there may be classes for spinnaker, non-spinnaker, and mixed-doubles.</p> <p>Use of autopilots are permitted during the race.</p>										



## HHSA West River Race

Date	Saturday, August 25, 2018																									
Eligibility	<p>All members of HHSA, PCRC, and SMSA are invited to participate. There is no fee for entry. Starts will be given for the following classes depending on entries:</p> <p>Spin A (valid PHRF Rating less than 100)</p> <p>Spin B (valid PHRF Rating greater than 100)</p> <p>Non-Spin Racing (boats with an upwind Sail Area-to-Displacement ratio equal to or greater than 18.0)</p> <p>Non-Spin Cruising (boats with an upwind Sail Area-to-Displacement ratio less than 18.0)</p>																									
Approx. Times	<p>The table shows the approximate times for the race.</p> <table><tr><th><i>Signal</i></th><th><i>Spinnaker A</i></th><th><i>Spinnaker B</i></th><th><i>Non-Spin Racing</i></th><th><i>Non-Spin Cruising</i></th></tr><tr><td>Warning</td><td>1055</td><td>1100</td><td>1105</td><td>1110</td></tr><tr><td>Preparatory</td><td>1056</td><td>1101</td><td>1106</td><td>1111</td></tr><tr><td>One-minute</td><td>1059</td><td>1104</td><td>1109</td><td>1114</td></tr><tr><td>Start</td><td>1100</td><td>1105</td><td>1110</td><td>1115</td></tr></table> <p>Note: Depending on entries classes may be combined and scored as a single class; or starts may be combined and scored as separate classes.</p>	<i>Signal</i>	<i>Spinnaker A</i>	<i>Spinnaker B</i>	<i>Non-Spin Racing</i>	<i>Non-Spin Cruising</i>	Warning	1055	1100	1105	1110	Preparatory	1056	1101	1106	1111	One-minute	1059	1104	1109	1114	Start	1100	1105	1110	1115
<i>Signal</i>	<i>Spinnaker A</i>	<i>Spinnaker B</i>	<i>Non-Spin Racing</i>	<i>Non-Spin Cruising</i>																						
Warning	1055	1100	1105	1110																						
Preparatory	1056	1101	1106	1111																						
One-minute	1059	1104	1109	1114																						
Start	1100	1105	1110	1115																						
Class Flags	<p>Spinnaker A - "9" flag</p> <p>Spinnaker B - "6" flag</p> <p>Non-Spinnaker Racing - "5" flag</p> <p>Non-Spinnaker Cruising - "white" square or pennant</p> <p>Competitors are not required to display the class flag</p>																									
Radio	Boats should monitor VHF Channel 68 for courtesy communications from the Race Committee.																									
Skippers' Meeting	<p>None.</p> <p>Preregistration on <a href="http://www.hhsa.org">www.hhsa.org</a> is required.</p>																									
Registration	<p>HHSA entrants should register on the HHSA website. Non-HHSA entrants should submit the following information to the HHSA Rear Commodore Racing via e-mail at <a href="mailto:slotwita@yahoo.com">slotwita@yahoo.com</a> or via mail at Ted Slotwinski, 1016 Cosimano Place, West River, MD 20778:</p> <p>Boat name. Owner/skipper. Boat make and model. Owner club affiliation. PHRF Circular Random ratings. PHRF Upwind Sail Area-to-Displacement ratio. E-mail or phone contact for owner/skipper.</p>																									





## HHSA Sailing Instructions 2018

	An entrant list will be maintained on the HHSA web site racing page.
Rendezvous	Race Committee at HHSA A at approx. 1000 hours
Start	Between Committee Boat and HHSA A
Finish	In Galesville between the RC Flag on the Racing Platform at the end of Pirates Cove pier and the Orange/White marker, PCRC Mark "X"
Course	Leave to port: Can 83A, West River Bell G1, West River G1A In addition West River Markers 2, 3, 4, 5, and 6 plus the white shoal mark between Markers 3 and 5 shall be passed on the channel side. Approximately 13 nautical miles.
Scoring	Scoring will be Time-on-Time using PHRF Circular Random ratings and the following formulae:  Corrected time = (elapsed time) x (time correction factor, TCF)  $TCF = 550 / (550 + PHRF \text{ rating})$
Check In	Upon reaching the starting area and prior to the race, boats shall check in with the Race Committee by coming close and hailing. Keep radio usage to a minimum.
Time Qualifications	In order for the race to qualify, the lead boat in each class must finish within six hours of the class start. The Race Committee will stay on station until at least 90 minutes after the last class qualifies. Boats finishing after the Race Committee has left station shall take their own finish times and report their results to the Race Committee on the same day of the event. Boats retiring from the race after starting should notify the Race Committee via Channel 68, or text the HHSA Rear Commodore Racing (Ted Slotwinski) at 571-232-3482.
Protests	The protest time limit is 2 hours after racing has concluded for the day.
Awards	Awards will be presented at the HHSA Winter Banquet. For HHSA boats, counts towards High Point, and Commodore's Cup. See HHSA Racing Rules for details.
Social	Skippers, crew, and guests are invited to join a post race gathering in Galesville at a local restaurant to be announced.
Other	Amendments to the Sailing Instructions will be posted no later than Friday August 24 on the HHSA web site: <a href="http://hhsa.org">hhsa.org</a> .



## **Appendix A - SPECIAL INSTRUCTIONS**

### **8.1 Handicaps for Cruising Boats**

Cruisers will be assigned provisional PHRF handicaps by the Official Scorer or by the Rear Commodore/Racing after the race based on the PHRF of New England posted ratings.

### **8.2 Grounding - Rule 42.3(i)**

This modifies Rule 42. To get clear after grounding, a boat may use force applied by a propulsion engine provided the boat does not gain a significant advantage in the race.



## Appendix B

### SUPPLEMENTARY COURSE INFORMATION

#### Location of HHS Marks

The following table shows approximate positions of HHS marks. A more complete listing can be found on the Racing website and in the HHS Course Book.

Mark	Latitude (N)	Longitude (W)	HHS
Herring Bay 1 (Green)	38° 44.433'	076° 30.838'	W
Herring Bay 2 (Red)	38° 44.526'	076° 32.698'	Y
81A (Green)	38° 43.576'	076° 29.939'	I
83A (Green)	38° 46.134'	076° 29.701'	O
HHS A (Yellow)	38° 44.647'	076° 31.993'	A
HHS B (Yellow)	38° 45.450'	076° 31.650'	B
HHS C (Yellow)	38° 45.500'	076° 30.320'	C

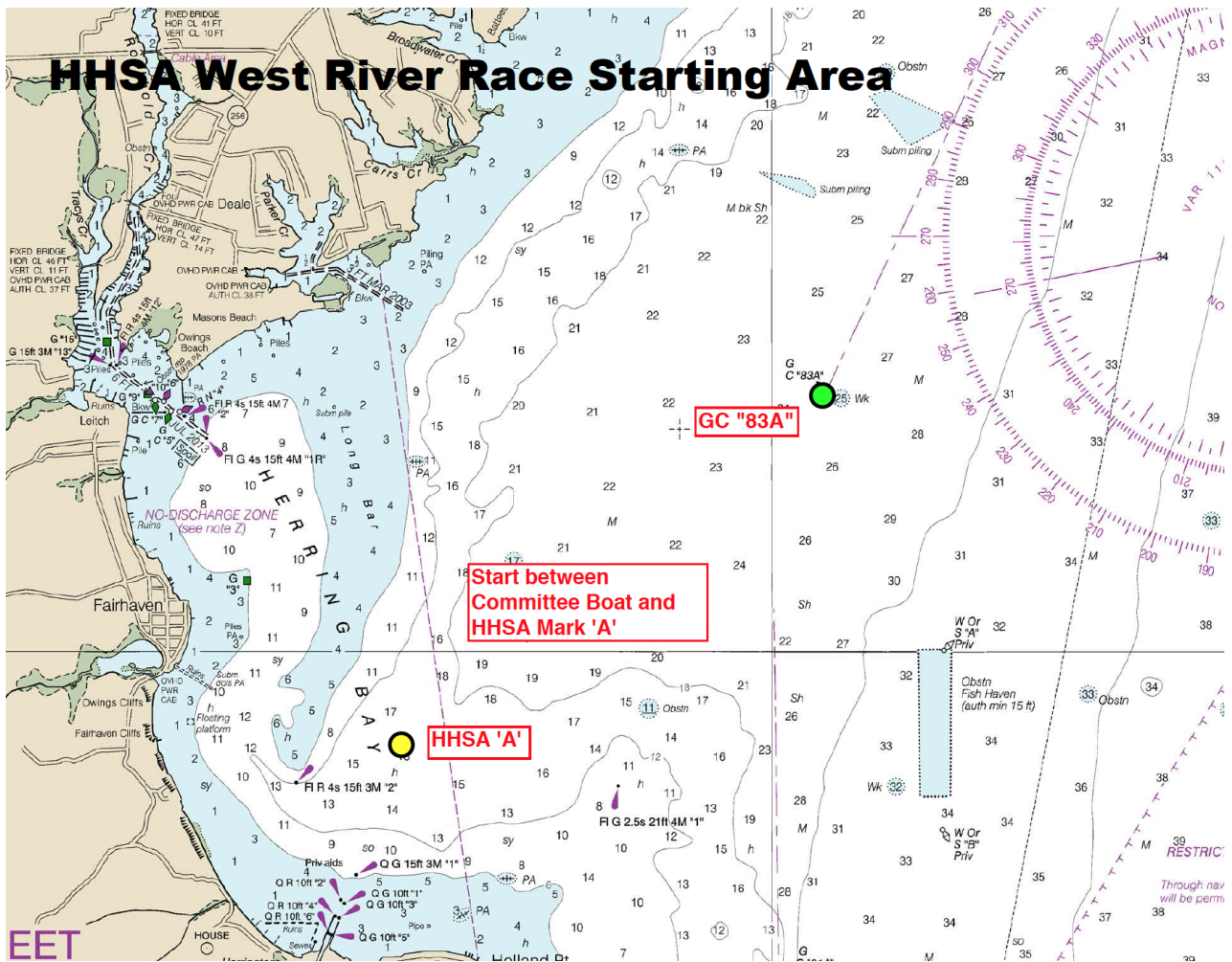


## Location of Finish Line





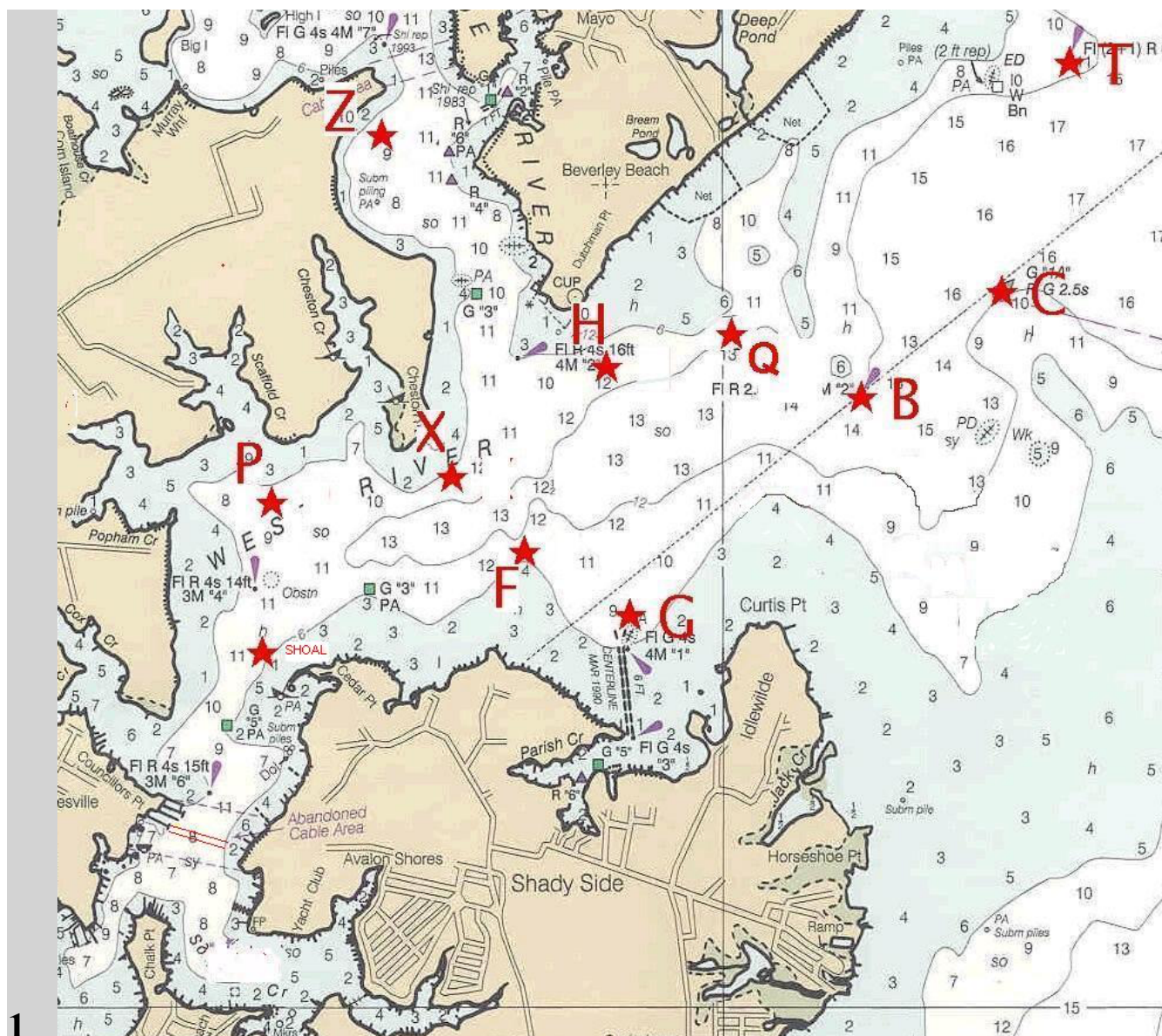
## Starting Area







## PCRC West River Marks



### PCRC Mark Locations (Approximate):

**S - (Shoal)** 38 degrees 51'.0N, 76 degrees 31'.9 W

**P -** 38 degrees 51'.6N, 76 degrees 31'.9 W

**X -** 38 degrees 51'.5N, 76 degrees 31'.1 W

**F -** 38 degrees 51'.4N, 76 degrees 30'.8 W



**G- 38 degrees 51'.2N, 76 degrees 30'.5 W**

**H - 38 degrees 51'.9N, 76 degrees 30'.7 W**

**Z- 38 degrees 52'.8N, 76 degrees 31'.3 W**

**Q- 38 degrees 52'.0N, 76 degrees 30'.1 W**

**GOVERNMENT MARKS:**

**B (R 2) 38 degrees 51'.94N, 76 degrees 26'.4 W**

**C (G 1A) 38 degrees 52'.20N, 76 degrees 28'.9 W**

**T (fl (2+1)R) 38 degrees 53'.00N, 76 degrees 28'.60 W**



## HHSA Informal Cruise Pursuit Race

Date	Saturday, (TBD)
Registration	Those wishing to participate will need to register their intent by the Thursday prior to the race date. Registration forms will be available on the HHSA website and via email to HHSA members approximately one week prior to the race.
Start Times	The boat with the highest handicap rating will start at 1000 hours. See additional information below.
Skippers' Meetings	0830 hours at both the HHS bulletin board and the HHN Marina Office. At that time the destination will be announced, the finish mark will be announced, and each boat will be given a starting time.
Rendezvous	Race Committee at HHSA A.
Classes	There will be a Double-handed Class and an Open Class for boats with more than two crew.
Start	"Pursuit Start" at HHSA A – The boat with the highest PHRF or assigned handicap rating will start at 1000 hours, and thereafter each boat will start according to the start times provided at the skippers' meeting.  The time-on-distance scoring method will be used.
Finish	Racers will take their own times when they reach a point where the finishing mark is abeam of their mast and they are within 100 feet of the designated finish mark. The first boat to finish will be the winner.
Course	To the weekend's cruising destination which will be announced at skippers' meeting.
Time Qualifications	There are no time limits; participants are encouraged to arrive at the destination by 1700.
Protests	Not encouraged, but will be adjudicated during Happy Hour by all present.
Awards	These are special interest races and will not be scored for High Point purposes. Special awards may be presented.
Social	Rafting Happy Hour ~1700 hrs. Bring hors d'oeuvres to share and your own drink.
Other	VHF Channel 68 will be monitored.





## HHSA Autumn Classic Race

Date	Sunday, October 14, 2018															
Approx. Times	<p>The table shows the approximate times for the race.</p> <table><tr><td><i>Signal</i></td><td><i>Spinnaker</i></td><td><i>Non-Spinnaker</i></td></tr><tr><td>Warning</td><td>1055</td><td>1100</td></tr><tr><td>Preparatory</td><td>1056</td><td>1101</td></tr><tr><td>One-minute</td><td>1059</td><td>1104</td></tr><tr><td>Start</td><td>1100</td><td>1105</td></tr></table> <p><b>Note:</b> Non-Spinnaker Racing and Non-Spinnaker Cruising will start together but will be scored separately. Class warning flags will be “6” for Spin and “5” for combined Non-Spin.</p>	<i>Signal</i>	<i>Spinnaker</i>	<i>Non-Spinnaker</i>	Warning	1055	1100	Preparatory	1056	1101	One-minute	1059	1104	Start	1100	1105
<i>Signal</i>	<i>Spinnaker</i>	<i>Non-Spinnaker</i>														
Warning	1055	1100														
Preparatory	1056	1101														
One-minute	1059	1104														
Start	1100	1105														
Skippers’ Meeting	<p>None.</p> <p>Preregistration on <a href="http://www.hhsa.org">www.hhsa.org</a> is recommended.</p>															
Rendezvous	Race Committee at HHSA A at approx. 1000 hours															
Start	Between Committee Boat and nearby mark															
Finish	Between Committee Boat and HHSA A															
Course	The Race Committee shall select a course from the HHSA Course Book. The course version (Long or Short) for each class will be designated by boards displayed on the Committee Boat.															
Time Qualifications	In order for the race to qualify, the lead boat in each class must finish by 1400 hours. Each boat must finish by 1530 hours or be scored as TLE. This modifies RRS 35.															
Protests	The protest time limit is 2 hours after racing has concluded for the day.															
Awards	Counts towards High Point and Commodore’s Cup. See HHSA Racing Rules for details.															
Social	An informal gathering at a local restaurant or location announced by the Race Committee.															
Other	VHF Channel 68 will be monitored.															



## HHSA Frostbite Series (6 multi-race Days)

Dates	Sundays Nov 4, Nov 11, Nov 18, Nov 25, Dec 2, Dec 9															
Approx. Times for 1 <sup>st</sup> Race	<table><tr><td><i>Signal</i></td><td><i>Sound</i></td><td><i>All Boats</i></td></tr><tr><td>Warning</td><td>(●)</td><td>1155</td></tr><tr><td>Preparatory</td><td>(●)</td><td>1156</td></tr><tr><td>One-minute</td><td>(—)</td><td>1159</td></tr><tr><td>Start</td><td>(●)</td><td>1200</td></tr></table> <p>The table shows the approximate times for the first race. Multiple races may be sailed. The starting sequence for subsequent races will begin as soon as practical after all boats have finished the previous race. The class flag shall be a “5” Flag.</p>	<i>Signal</i>	<i>Sound</i>	<i>All Boats</i>	Warning	(●)	1155	Preparatory	(●)	1156	One-minute	(—)	1159	Start	(●)	1200
<i>Signal</i>	<i>Sound</i>	<i>All Boats</i>														
Warning	(●)	1155														
Preparatory	(●)	1156														
One-minute	(—)	1159														
Start	(●)	1200														
Skippers’ Meeting	None. Preregistration on <a href="http://www.hhsa.org">www.hhsa.org</a> is recommended.															
Rendezvous	Race Committee at HHSA A or its vicinity at approx. 1130															
Start	Between Committee Boat and drop mark or other nearby mark															
Finish	Between Committee Boat and nearby mark															
Course ‡	Designated by sign boards displayed on the Committee Boat. The Race Committee shall select courses from the HHSA Course Book, and will select courses that will allow for races to be completed in approximately 1 hour. If HHSA Marks A, B, and C have been pulled for the season, the Race Committee shall select Frostbite Alternate Course A, B, or C.															
Time Qualifications	<p>In order for the first race to qualify, the lead boat in must finish within 90 minutes after the starting signal, and each boat must finish within 45 minutes of the first boat or be scored as TLE. There is no time limit for subsequent races. No race will be started after 1430.</p> <p>The Race Committee will announce TLE for boats still on the course on VHF Channel 68. This modifies RRS 35.</p>															
Protests	The protest time limit is 2 hours after racing has concluded for the day.															



Awards	Does not count towards the season High Point, but does count for Commodore's Cup. Awards given out for the Series. See HHSA Racing Rules for details.								
Special Instructions	<p>Races are for non-spinnaker boats. Double headsails are not permitted. Whisker poles are not permitted. After a boat has started, crew members wearing PFD's are <b>only</b> allowed out of the cockpit during a tack or a gybe to assist moving the headsail around the mast and standing rigging and skirt the headsail. Sitting on the rail is not permitted unless when doing so, feet are in the cockpit. Headsail changes after a boat has started are not permitted. Reefing or un-reefing the mainsail after a boat has started is not permitted. Rolling/unrolling a roller furling headsail is permitted.</p> <p>At the discretion of the Race Committee, racing <b>may not</b> be conducted if there is heavy ice in either of the marinas or if the true wind speed is over 20 knots. The RC is encouraged to announce cancellations in advance on VHF Channel 68.</p> <p>Participating boats shall comply with PHRF of the Chesapeake Category 4 Special Safety Regulations.</p>								
Social	An informal gathering at a local restaurant after the race.								
Scoring	<p>Scoring shall be per the HHSA Racing Rules, Section 17 Scoring, except that Part F. is revised as follows:</p> <p style="padding-left: 40px;">F. For the series, the number of races scored will be dependent on the number of completed races in the series, as described in the following table:</p> <table border="1" style="margin-left: auto; margin-right: auto;"> <thead> <tr> <th>Number of Races Completed</th><th>Throw Outs</th></tr> </thead> <tbody> <tr> <td>8 – 14</td><td>2</td></tr> <tr> <td>5 - 7</td><td>1</td></tr> <tr> <td>&lt; 5</td><td>0</td></tr> </tbody> </table> <p>And, a boat that did not start, did not finish, retired after finishing, was TLE, did not come to the starting area, or was disqualified shall be scored points for the finish place one more than the number of boats that finished. This changes RRS A 4.2, RRS A 9, HHSA Rule 18.C.4 and HHSA Rule 18.C.5.</p>	Number of Races Completed	Throw Outs	8 – 14	2	5 - 7	1	< 5	0
Number of Races Completed	Throw Outs								
8 – 14	2								
5 - 7	1								
< 5	0								



## Appendix A - SPECIAL INSTRUCTIONS FOR CRUISING CLASSES

### *Handicaps for Cruiser Racing*

Cruisers will be assigned provisional PHRF handicaps at the skippers' meeting or by the Rear Commodore/Racing after the race unless a skipper can show a valid certificate.

### *Course Information*

The day's race course will be selected from the HHSRA Course Book, copies of which are available for download from the HHSRA Racing website and upon request from the Rear Commodore/Racing.

The following table shows approximate positions of marks that are most often used in setting courses. A more complete listing can be found on the Racing website and in the HHSRA Course Book.

Mark	Latitude (N)	Longitude (W)	HHSRA
Herring Bay 1 (Green)	38° 44.433'	076° 30.838'	W
Herring Bay 2 (Red)	38° 44.526'	076° 32.698'	Y
81A (Green)	38° 43.576'	076° 29.939'	I
83A (Green)	38° 46.134'	076° 29.701'	O
HHSRA A (Yellow)	38° 44.647'	076° 31.993'	A
HHSRA B (Yellow)	38° 45.450'	076° 31.650'	B
HHSRA C (Yellow)	38° 45.500'	076° 30.320'	C
HHSRA Inflated Tetrahedron	Variable	Variable	U
HHSRA Inflated Cylinder	Variable	Variable	G

### *Racing Rules for Cruisers*

Upon reaching the starting area and prior to the race, boats shall check in with the Race Committee by coming close and hailing. Note the race course marks displayed on sign boards on the committee boat lifelines on the side away from the starting line. Keep radio usage to a minimum, but monitor **VHF Channel 68** before and during the race.



## Example Starting Sequence

<i>Signal</i>	<i>Flag &amp; Sound</i>	<i>VHF</i>	<i>Example time race</i>
	'L' lowered, multiple short horn blasts		10:54
Warning	Class flag(s) raised; 1 horn blast	"5, 4, 3, 2, "	10:55
Preparatory	'P' raised; 1 horn blast	"Racers Prep"	10:56
One-minute	'P' lowered; 1 long horn blast	"5, 4, 3, 2, "	10:59
Starting	Class flag(s) lowered; 1 sound, <b>next class flag raised</b>	"5, 4, 3, 2, all clear"	11:00
Preparatory	'P' raised; 1 horn blast	"Cruiser Prep"	11:01
One-Minute	'P' lowered; 1 long horn blast	"5, 4, 3, 2, all clear"	11:04
Starting	Class flag lowered, 1 sound*	"5, 4, 3, 2, all clear"	11:05

\* sound may be a horn blast or cannon fire

A boat must pass across the line between the committee boat's mast and the starting mark (inflatable mark or fixed mark such as HHS A) heading in the direction of the first mark of the course, as soon after the starting signal as possible.

Similarly at the finish, a boat must cross the line between the committee boat's mast and the finishing mark in the direction from the preceding mark of the course. The Race Committee will indicate a finish with a sound signal (horn or cannon).



## ***Basic Right Of Way Rules***

On opposite tacks, a boat on port tack (boom on starboard side of boat centerline) shall keep clear of a boat on starboard tack (boom on port side of boat centerline). It doesn't matter which side any head sail is on.

Note, the boats may not be sailing in the same direction, i.e., a port tack boat sailing upwind must yield to a starboard tack boat sailing downwind, and vice versa.

Note, downwind it is very easy to change tacks by simply switching the main from one side to the other.

On the same tack, overlapped (any portion of the following boat ahead of an imaginary line perpendicular to the leading boats transom), the boat to windward shall keep clear of the leeward boat:

Sailing downwind, leeward is defined as the side the boom is on, so two boats sailing dead downwind with booms on their port side (both on starboard tack), the boat to port would be the leeward boat and the boat to starboard must keep clear. Overlaps are often hard to judge. If there is doubt, assume one exists.

On the same tack, not overlapped, the boat clear astern shall keep clear of the boat clear ahead. Once an overlap is established then windward/leeward applies.

There is usually little to be gained sailing adjacent to another boat, so when given a choice, pass either three or more boats lengths to windward or leeward of another boat.

Always allow the give way boat room and time to respond. Hail the give way boat to give way.

Avoid collisions regardless of who has right-of-way.

Be especially careful at the start and rounding marks as this is where there are typically several boats sailing in close proximity.

All participants, racers and cruisers, are encouraged to fly the HHSA burgee, so that participants can be readily identified on the course.



## 2 Appendix B - SPECIAL INSTRUCTIONS FOR A RABBIT START

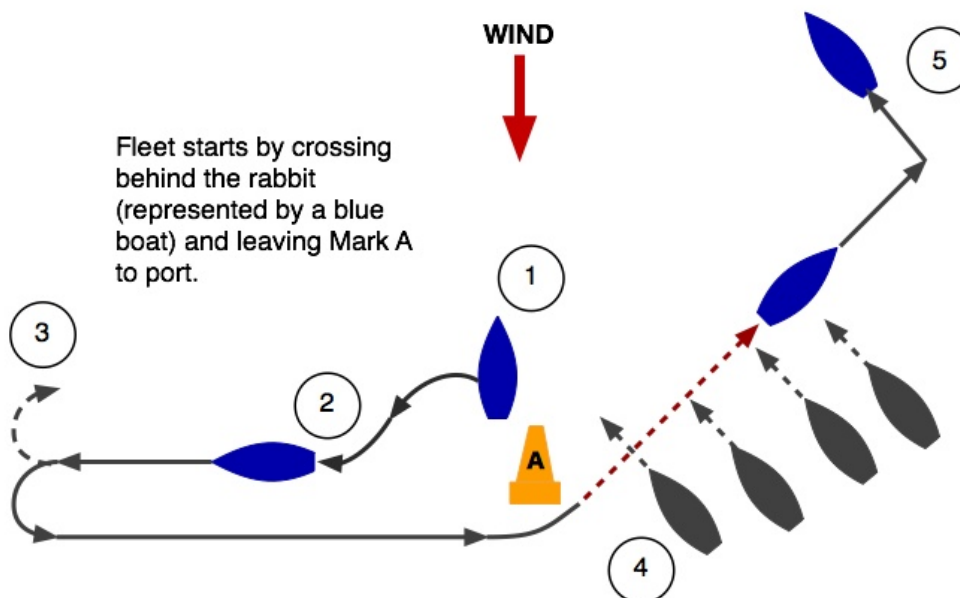
1. In the absence of an on-station Race Committee, the following replaces sections of the Sailing Instructions.
2. If the “Rabbit” has not been designated prior to the race, the “Rabbit” shall be a boat chosen among boats which are present at the rendezvous location. The "Rabbit" shall display the HNSA burgee on its backstay for identification.
3. There will be only one start for all boats, and it will be a “Rabbit Start”. The Rabbit Start is used to start a race to Windward in the absence of a Committee Boat. The Rabbit shall announce the course (Long or Short) for each class, and each class will be scored separately. The Rabbit shall serve as the check in boat and signal boat. All signals will be horn and/or radio. No visual signals will be used.
4. At approximately the time published in the Sailing Instructions (SI's) for the Warning Signal, the Rabbit will pass the starting mark on a starboard course. The Rabbit shall proceed a distance to allow returning to the starting mark and heading off close hauled on port tack at approximately the start time published in the SIs. All boats must leave the starting mark to port and pass behind the Rabbit on starboard tack in order to start, as described in more detail below. The Rabbit shall record the time her transom passes the starting mark as the official race start time.

Position	Signal	Approx. Time	Sound	Rabbit's Actions
1	Warning	Time as published in SI's	1 sound	Pass in the immediate vicinity of the starting mark on a starboard tack beam reach which she maintains for about 2 minutes.
2		~+3 mins.		Tack or jibe; return to the starting mark on port tack beam reach
3	Start	~+5 mins.	1 sound	Pass the starting mark to port, sailing close hauled. Record the start time.
4	End of starting sequence	~+ 6 mins.		The Rabbit may tack to starboard at any time after all boats have crossed her stern, or after the Rabbit has crossed the bows of



				all boats, or any time later than 90 seconds after passing the starting mark.
--	--	--	--	---

5. The diagram below shows the sequence in a visual format



6. The starting line is the line between the port-end starting mark and the Rabbit's transom. A boat starts when it crosses the starting line while the Rabbit is on port tack. After starting, all boats shall remain on starboard tack until the Rabbit has tacked to starboard. A boat failing to start properly may do so by sailing to the approximate location the Rabbit tacked to starboard and make a turn – one tack and one gybe.
7. All times are approximate. The absence of a sound signal shall be disregarded. This modifies RRS 26.
8. Boats shall take their own finish times in accordance with HHSA Racing Rules Section 8.B and 8.C and announce the time over VHF Channel 68 until acknowledged by the Rear Commodore (Racing) or another competitor. This modifies rule 8.B.
9. Finishing boats shall stay in the vicinity of the finish line until the boat behind them has finished and announced a finish time. The last boat to finish shall disregard this requirement.